

Year 1 Spring Term

The Great Fire of London

Islam and Christianity

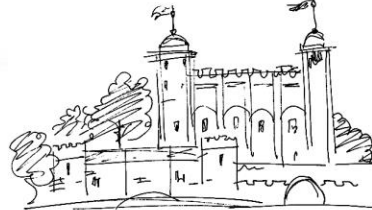
- Recognise and name features of religions and beliefs
- Recognise features of religious life and practice



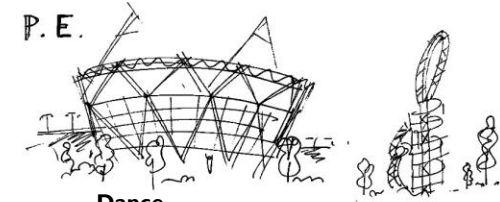
RE.

History and Geography

- Recognise and describe special times or events for family or friends
- Explain own knowledge and understand and ask questions
- Use simple compass directions (North, South, East and West) and locational and directional language (e.g. near, and far; left and right, to describe the location of features and routes on a map



HUMANITIES



P. E.

Dance

Hit, catch and run

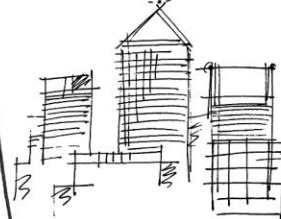
- Develop sending and receiving skills to benefit fielding as a team
- Introduce the concept of simple tactics

Send and return

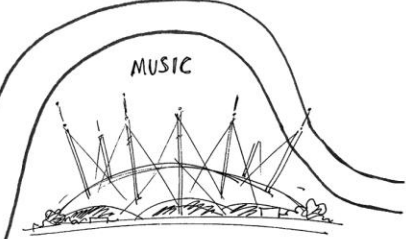
- Able to send an object with increased confidence using hand or bat
- Move towards a moving ball to return
- Sending and returning a variety of balls

Maths –No Problem

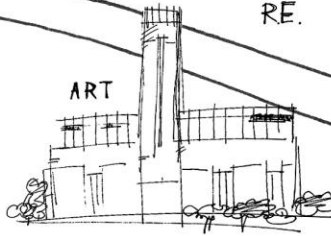
- Numbers to 50
- Addition and Subtraction within 20
- Shape and pattern
- Height and length
- Position and direction



MATHS



MUSIC



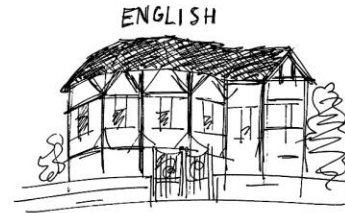
ART

The Great Fire of London

- Observation Sketches
- Construct (making Tudor houses)

Jackson Pollock

- Create and observe patterns
- Naming and mixing colours



ENGLISH

Handwriting

- Leaving spaces between words
- Grammar, Punctuation & spelling
- Punctuate sentences with capital letters, full stops
- Use capital letters for places, people and days of the week
- Use prefix 'un'
- Read and write Year 1 common exception words

Crackle Crackle - anon
The Great Fire of London by Liz Gogeryly

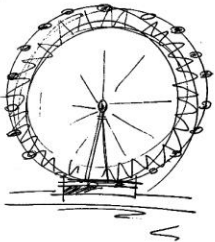
SCIENCE



Everyday materials

- Name, describe and sort everyday materials
- Heating and cooling materials

DESIGN



Cooking (baking bread)

- How to prepare simple dishes safely and hygienically
- How to use techniques such as cutting, peeling and grating

Singing

Exploring different instruments

- Experiment with, create, select and combine sounds using the interrelated dimensions of music