

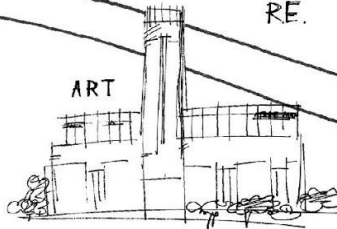
# Year 6 Summer Term

## R.E.

- Jerusalem - place study



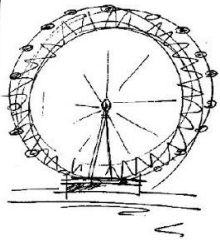
RE.



- Art**  
**Cityscapes**
- Artist focus: Shaun Tan
  - One and two point perspective on a variety of scales

- Form**
- Artist focus: Antony Gormley
  - Sculpting from observations.

## DESIGN



## DT Cars

- Carry out research using surveys, interviews, questionnaires.
- Use a range of tools to make products that that are accurately assembled.
- Investigate famous manufacturing and engineering companies.

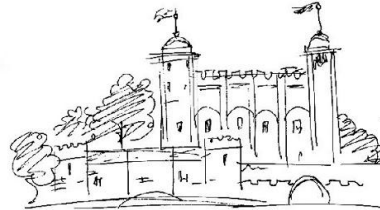
## Humanities

### British Trade and Economics

- Explore who we trade with from the empire and how this has changed over time
- The effects of Brexit

### Call for the return of the Benin Heads

- How did artefacts come to Britain?
- Why is the King of Benin calling for the bronzes to be returned?
- How are Western museums responding?



HUMANITIES



ENGLISH

## English

### The Arrival

- Expanded Nouns
- Emotive vocabulary
- Cohesion
- Narrative

### Comedy of Errors

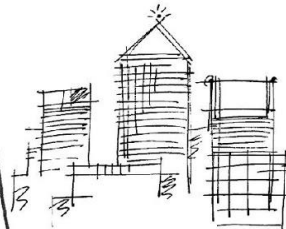
- Playscripts

### Children of the Benin Kingdom

- Information texts
- Persuasive writing

## Maths

- Measure
- Geometry
- Position and movement
- Statistics



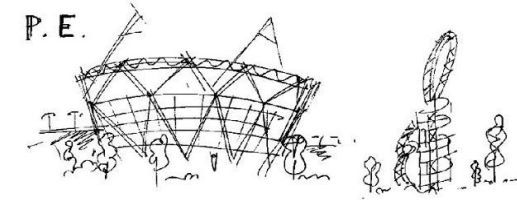
MATHS

## SCIENCE



## Science

- Evolution and Inheritance
- Human Hearts and Health

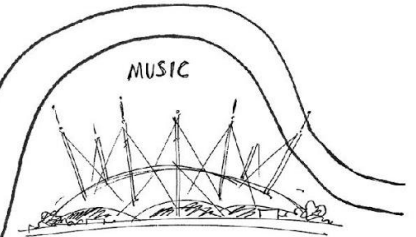


P. E.

## P.E.

- Tennis
- Gymnastics
- Athletics

MUSIC



## Music

- Singing and Songwriting
- Create, Perform and Analyse Expressive Compositions