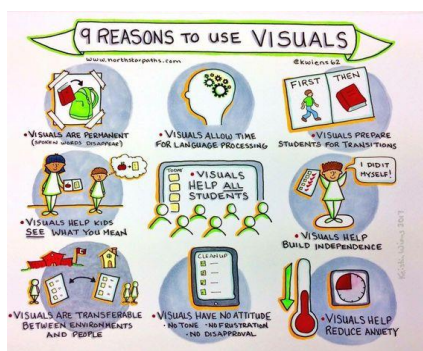


## HEADTEACHER'S NOTE

This week saw the Friends of Belham Annual General Meeting (AGM). You can read all about it in the Friends Friendly attached. Our Friends of Belham play such an important role in the life of the school and the wider community. Crucially, the Friends are not a PTA (Parents & Teachers Association) as we very much value and invite other members of the local community to take part. They do a wonderful job in fundraising for projects such as the Makers Room and the Laneway but also run many family events for our Belhamites to enjoy. The Winter Fair is next Saturday 3<sup>rd</sup> December at The Belham. Please do come along if you can and spread the word to neighbours and friends locally. We would love to see them. Equally if you would like to volunteer for the fair or future events do get in touch with one of the committee. We would like to congratulate Chantelle in her new role as Chair, extend our thanks once again to Kathryn and welcome the newer members of the committee, Maria, Sarah and Rose.

## A MESSAGE FROM THE INCLUSION TEAM



Next week we will be starting a series of workshops linked to Inclusion. The first Workshop will be on 'Visuals' on **Wednesday 30th November from 9am-10am** in the main school hall.

In the workshop, we will be sharing how Visuals are used within the school to support children, with a particular focus on children with ASD. We will also discuss how they may be useful with your children at home.

The next Workshop will be on Behaviour Management. Date TBC.

## KEY DATES

**Thursday 1<sup>st</sup> December** –

Christmas Show Rec/Y1/Y2

**Friday 2<sup>nd</sup> December**

Christmas Show Rec/Y1/Y2

**Saturday 3<sup>rd</sup> December**

**FESTIVE FAIR**

**Sunday 4<sup>th</sup> December**

Bookings for early birds and owls for Spring term will open at 8pm (details below)

**Wednesday 7<sup>th</sup> December**

Christmas Show Y3/4/5/6

**TRIP** Y2 'Scroogalicious' at Theatre Peckham (arrival back at school between 3.30 -3.45pm. The office will notify you to confirm the time to come and pick the children up.)

**Thursday 8<sup>th</sup> December**

Christmas Show Y3/4/5/6

**Monday 12<sup>th</sup> December**

**Last day of morning and after school clubs**

Y2 - Travel Thru the Ages workshop (at school)

**Wednesday 14<sup>th</sup> December**

Christmas Lunch and Jumper Day

SEWING & CRAFT (MAKE UP CLUB)

**Thursday 15<sup>th</sup> December**

ART & CRAFT (MAKE UP CLUB)

**Friday 16 December**

Last day of term (**finish at 1:15pm**)

Please find a link [here](#) to our full school events calendar.

Please find a link [here](#) to our PE & SWIM timetable.

## EARLY BIRDS AND OWLS SPRING TERM 2023

For Spring term 2023, bookings will open at **8.00pm on Sunday 4<sup>th</sup> December**. Text reminders will be sent out on the Friday and Saturday before bookings open. Please make sure to log in to your SchoolsBuddy account at **8pm** to secure bookings

## BEFORE & AFTER SCHOOL CLUBS 2023

Selections for morning and after school clubs for Spring term remain open for selection on schoolsbuddy and will close now on **Monday morning**. Please make sure to log in and select in order of preference, with number 1 being your most desired club. Full timetables can be viewed [here](#).

## PECKHAM VOICES PROJECT – YEAR 5

Year 5 have waited very patiently for their turn to take part in our whole-school Peckham Voices Project - launched back in October in honour of Black History Month - but the wait was worth it...

This week, we were visited by Alex Mavolwane Wright who shared with us the extraordinary tale of her life across many different continents. She is also running small-group 'Talking Circles' with the children on the topic of racism - giving them space to express their thoughts and experiences in response to the stimulus of Nina Simone's beautiful 'I wish I Knew How It Would Feel to be Free'. Alex specialises in running Talking Circles in her work as an occupational psychologist so we have been immensely lucky to have her with us to facilitate such an important but complex and difficult topic with the children.



## CHRISTMAS FOOD APPEAL

Supported by Friends of Belham we will be collecting non-perishable general and festive food items on Wednesday 7<sup>th</sup> December. Please drop these into the office or give to nominated FoB volunteer on this day.

## SUPPORT FOR FAMILIES

Whilst we have always collected for food banks such as Albrighton and Pecan, we are aware that there are families within our own Belham community who may be struggling. The cost of living crisis is hitting very hard and we want to support all those we can. Therefore, this year we will be opening our food bank collection to parents and carers before it is delivered to the Albrighton Centre.

We invite all our families who would benefit from this to visit our Main Hall on Friday 9<sup>th</sup> December from 9am-10am. If you are unable to make this time and would like us to put aside some items for you, please contact Eloise or Ally in confidence.





# THE FRIENDS' FRIENDLY

25<sup>th</sup> November 2022

Meet the Friends of Belham (FoB) Committee & Class Reps

<http://www.thebelhamprimaryschool.org.uk/friends-of-belham.html>

Contact us

[friendsofbelham@gmail.com](mailto:friendsofbelham@gmail.com)

## SAVE THE DATE

3 <sup>rd</sup> Dec	FoB Festive Fair
12 <sup>th</sup> Dec	FoB meeting with Xmas drinks after
4 <sup>th</sup> Feb	FoB Burns Night Ceilidh

## \*\*BELHAM WINTER FAIR – NEXT WEEKEND\*\*

Despite the challenges with the school playground, we are planning to go ahead with the Winter Fair **next Sat 3<sup>rd</sup> Dec 12-3pm**. It may need to be a slightly smaller event in more restricted areas. As you can see in the poster, we still have lots planned, so do come along, enjoy and/or help out on the day! Entry is free!

### Sign up here to help!

If you can help out on the day, for set-up, during or after the fair, we need help with:

- Kids festive crafts: Come and help make bookmarks and brilliant fabric pompom baubles!
- Santa's Grotto: one more Santa and helper elves required!
- Games: help with games including the Teddy Bear Tombola and Santa Flip!
- Kidz craft table: help supervise kids selling crafts
- Food & drinks: help sell bakes, hot dogs, drinks, etc.
- Christmas Trees: help move/distribute the trees!

Please sign up here (including your year group so we can contact you!):

<https://signup.zone/LTN6gQEE7dN4XEKhb>

### Santa's Grotto

Santa and his elves will be in attendance at the Fair. This year he will be seeing children in small groups of 10. Book tickets for a 10 min slot between 12-3pm here. Entry is free though all donations to support the cost of the presents are very welcome:

<https://www.tickettailor.com/events/friendsofbelham/803526>



### Kidz Craft Stall

In addition to paid market stalls (now full), we're hosting a children's charity craft stall. If your child has jewellery, cards, pictures, baked goods or any other hand-made items that they would like to sell at the fair, they can join the Kidz Craft table. Profits will go to FoB to give directly to school. Expenses can be claimed back. Please email [friendsofbelham@gmail.com](mailto:friendsofbelham@gmail.com) to reserve a place.

### Collecting teddies, jolly jars and Xmas Jumpers

Please drop donations as follows next Friday 2<sup>nd</sup> December – FoB will be there 8.30-9am with a box next to Melange shop on Maxted Road!

**Teddy Tombola:** Please donate any unloved nearly new soft toys to find a new home.

**Jolly Jars** are back! Fill a clean jar with small toys and sweets: a great way to pass on those Kinder Egg fillers that no longer get used so they get another play! You can even decorate it if you like!

**Xmas Jumpers:** Donate your Christmas Jumpers and receive a 50% off voucher to spend at the Christmas jumper stall at the fair.

**Drop off Friday 2<sup>nd</sup> Dec** at 8.45am at main school gate or school reception.

### Present donations for SDCAS (\*New\*)

At the fair, we will be collecting donated presents to give to the Bellenden Big Tree's collection to **the Southwark Day Centre for Asylum Seekers.**

Please bring unwrapped donations either on the day of the fair or at Friday drop off: small toys, books, new hats, socks, gloves, scarves, pants, gift vouchers – for all ages.

The Bellenden Big Tree will take place at 4pm after the fair on the corner of Bellenden Road and Choumert Road!

### Festive bakes

We're looking for donations of all kinds of festive bakes to sell at the Fair. Treats from all around the world are welcome. Vegan bakes are always popular! Please drop off on the morning of the fair via the Maxted Road gate – between 9.30am-12pm.

### Early entry for children with SEN

Children with SEN who would prefer to visit the fair in a calmer atmosphere can come in from 11.30am, before the main gates open at 12pm. If they want to see Santa early they should come upstairs to the grotto at 11.40 or 11.50 (no ticket needed).

### FOB MEETING & DRINKS 12<sup>TH</sup> DEC

Final FOB meeting this year will be at school on Mon 12<sup>th</sup> Dec at 6.30pm at school (join [here](#) remotely). Followed by Xmas drinks at Montpelier at 8pm!

## FOB AGM – A YEAR IN REVIEW & NEW COMMITTEE

Thanks to those who came to support the FoB Meet & Mingle and AGM this week. We reviewed the year's highlights and discussed a few plans for next year. We voted for and welcomed in Chantelle Edwards as the new Chair of FOB. We also voted and welcomed in three new committee members: Maria Driscoll, Rose McDonnell and Sarah Marien – to join existing members Doug, Lucy & Rachel.

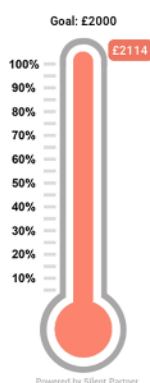
Some highlights of the past year:

- A fantastic series of community events, including fairs and the Fun Run
- Social events including the Quiz and the camping.
- Community events including Belham lates
- Cultural events including the Terrarium workshop and Peckham History walking tour.
- Kids events including disco and velodrome.
- Environmental work including gardening in the lane, and Bee art (and support).
- Support to school including the second hand uniform sorting and sales, and the reception playground upgrade.
- The activities to welcome new reception families, and say goodbye to the Year 6 leavers.
- And last but not least all the bake sales!

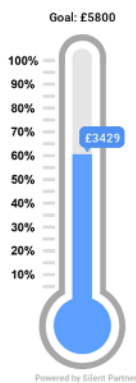
Doug presented the 21-22 accounts, highlights were:

- Net Fundraising total of £28, 486, with highest net income coming from the Fun Run and fairs.
- Funding for the big campaigns, including £10,314 to the Maker's Room upgrade, and £2,213 for the Reception Playground
- Funding for ongoing commitments to school including before-school sports clubs, music instruments, school theatre trips,
- Over £3k in donations to other charities (Dog Kennel Hill Adventure Playground, Ignite Hubs & UNICEF Ukraine)

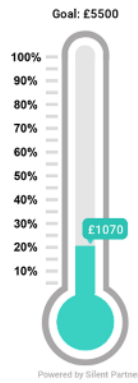
#### Emergency Support



#### Library Upgrade



#### Arts Fund



#### Belham Bees

